

Night Hawk

LONG RANGE ZOOM LASER IMAGING ILLUMINATOR

The Long Range Zoom Laser Imaging Illuminator system provides variable field of view and uniform illumination out to ranges in excess of 3,000 meters to point out and illuminate targets, with sufficient coverage area for use with visible EM-CCD cameras and Night Vision Goggles (NVGs) in darkness. The laser illuminator is packaged in our fourth generation sensor enclosure that combines over 20 years of field proven performance with incremental improvements to enhance performance, stability, durability and ease of deployment. Designed to withstand the harshest conditions and environments, this configuration has been successfully deployed in both mobile and fixed homeland security roles throughout the United States, as well as in force protection roles in both Afghanistan and Iraq. Most recently, it was provided for industrial security roles in the Middle East.

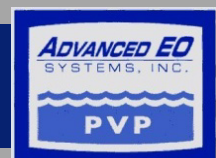
The system combines our proven bore-sight assembly design in an internally mounted configuration, providing ease of adjustment, extraordinary stability, and isolation from harsh environments. The entire enclosure is O-ring sealed and nitrogen purged. System power, serial interface and video output are all provided over a single hermetically sealed Mil-38999 series connector. The high quality forward window is designed and fabricated specifically for this product with stringent requirements for both optical figure and coating performance and durability.

Our Camera Control Board (CCB) handles communication and controls the laser. The CCB is a multifunction control board that performs closed loop control of up to five DC motors. This allows independent control of zoom and laser functions.



FEATURES & BENEFITS

- Uses non-visible spectrum laser light to illuminate targets
- Pinpoint accuracy at long ranges
- Illuminates targets from a safe distance at night
- Points out targets for tactical action
- Improved mission effectiveness
- Lightweight, rugged enclosure provides stability and isolation from harsh environments
- Based on program proven design
- Configured for both mobile and fixed applications
- Long-range performance in excess of 3,000 meters
- CCB multi-function control board allows for independent control of zoom and laser functions

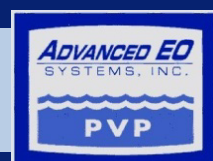
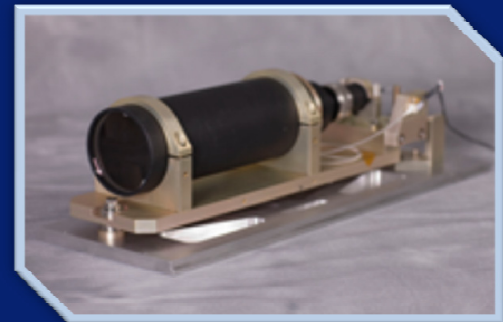
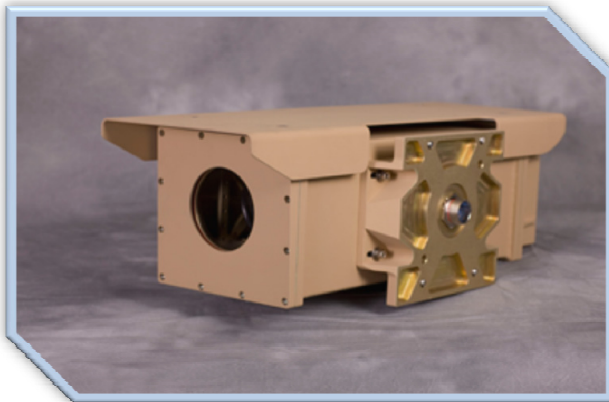
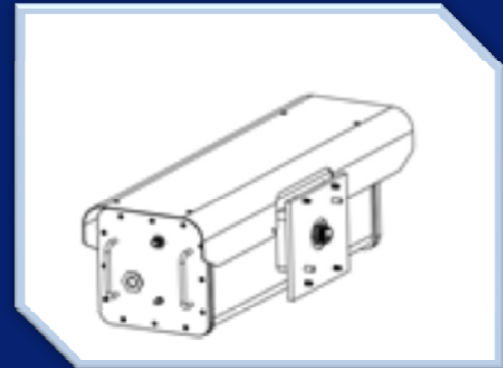
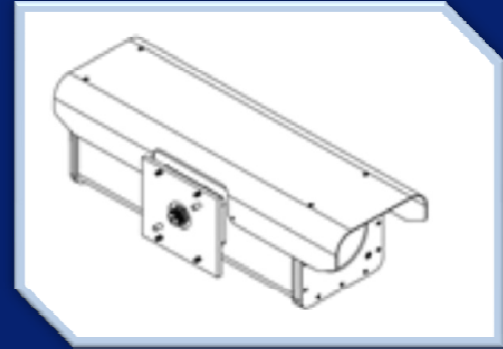


PVP Advanced EO Systems, Inc. products are listed under category XII and XIII of the United States Munitions List. International Traffic In Arms Regulations (ITAR) may require a valid export license prior to technical or hardware shipments or transmissions of information.

LONG RANGE ZOOM LASER IMAGING ILLUMINATOR

SPECIFICATIONS

Weight	18 lbs. (with sun shade)
Dimensions (inches)	20 x 6.5 x 6.5 (without sun shade)
Laser Wavelength	808 ±4 nm
Transmitted Beam Parameters	Power (factory set): 1.0 to 1.1 watts Beam Diameter at zero range: 71.4 mm
Beam Divergence (Full Width Half Maximum)	Homogenized Beam Limited: ~5 ± 0.5 mr User Available Zoom Limits: 5.9 mr to 50 mr
Eye Safe Range (NOHZ) at minimum beam divergence	Unaided Eye: >50 meters Binocular Aided Eye: >300 meters
Environment	Outdoor/Marine to MIL-STD-810 <ul style="list-style-type: none"> • Humidity, Salt Fog, Solar loading, Blowing Sand/Dust, and Blowing Rain • Temperature: -50°C to +75°C • Relative Humidity: 100%, validated with a complete immersion test on all units • Vibration: 3grms 50-500 Hz
Other	BK-7 forward window with >99% transmission from 400-1,000nm



Specifications are subject to change without notice. Call for latest revision.

PVP Advanced EO Systems Inc.
 14312 Franklin Avenue, Building 100
 Tustin, CA 92780
www.pvpaeo.com
 Contact: William J. "BJ" Rogers
 Tel: 859.426.0175
bj.rogers@pvpaeo.com